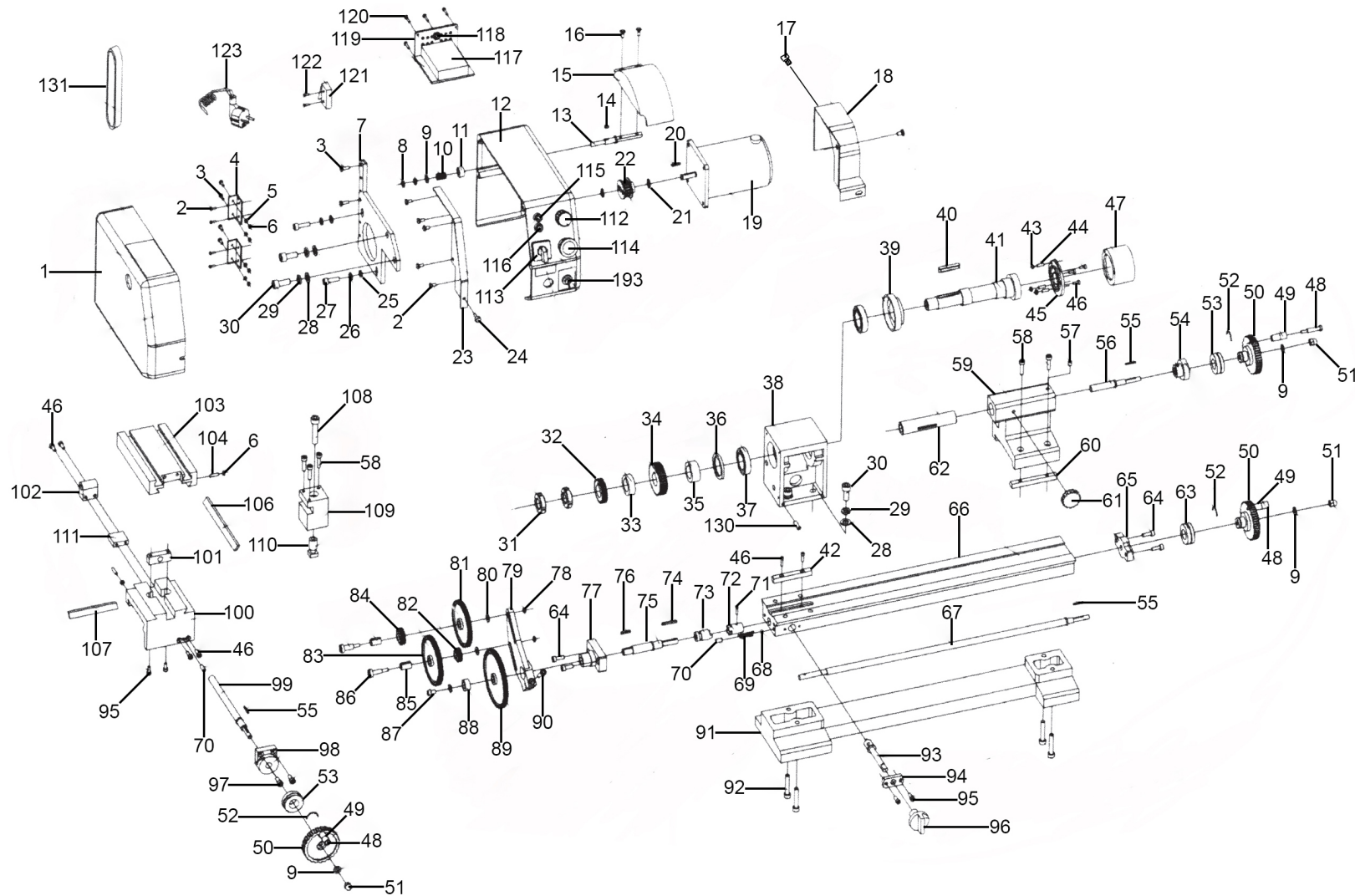




TM

Parts Information: Mini Lathe & Drilling Machine Model No: SM2503



NOTE: It is our policy to continually improve products and as such we reserve the right to alter data, specifications and component parts without prior notice.

There may be alternative versions of this product, please contact us should you require this information.

IMPORTANT: No liability is accepted for incorrect use of product. Spare parts must be fitted by a competent person

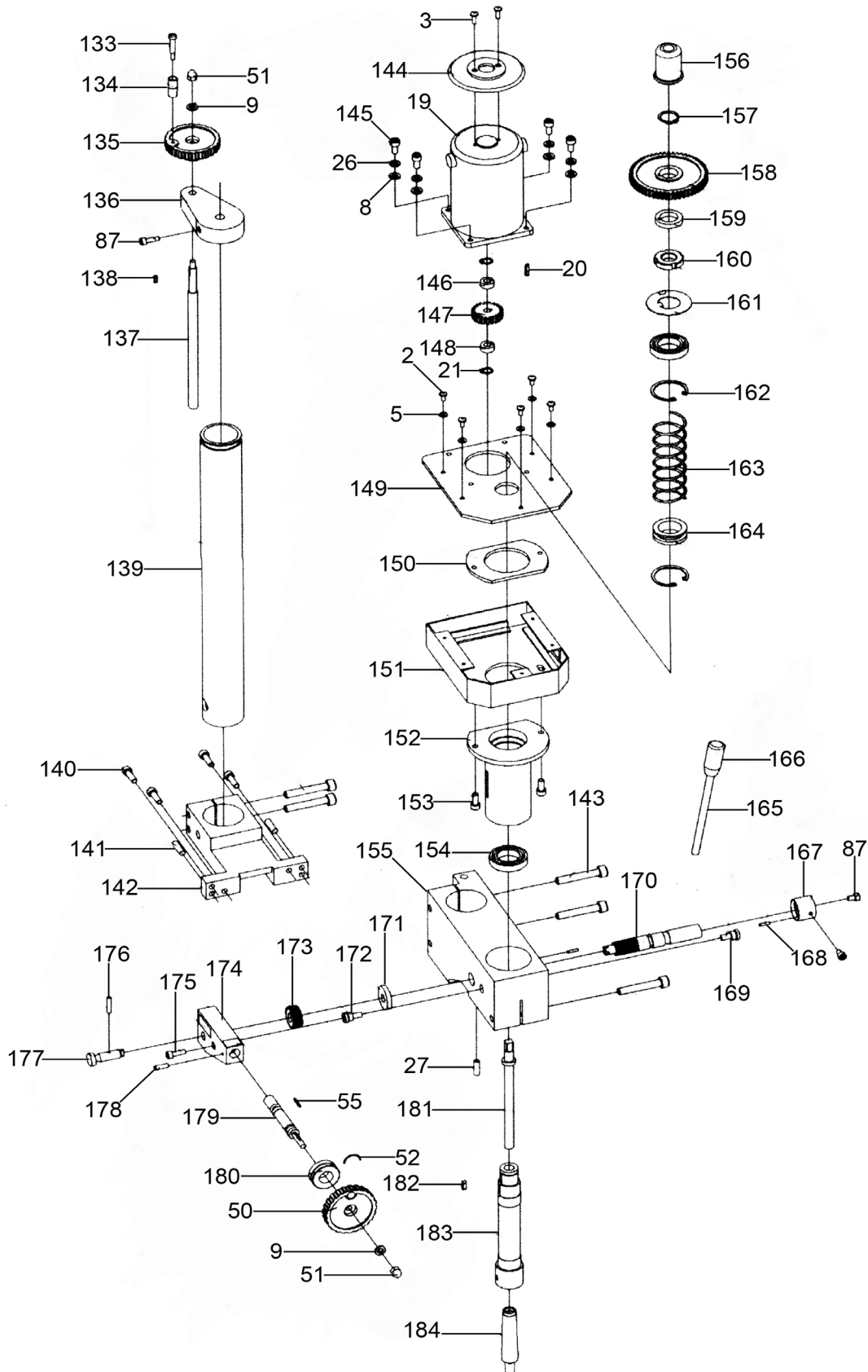
WARRANTY: Guarantee is 12 months from purchase date, proof of which will be required for any claim.

Jack Sealey Ltd t/a Sealey Group, Kempson Way, Suffolk Business Park, Bury St Edmunds, Suffolk, IP32 7AR UK

Jack Sealey (EU) Ltd t/a Sealey Group, Farney Street, Carrickmacross, Co. Monaghan, A81 PK68 Ireland

Tel: 01284 757500 • Email: sales@sealey.co.uk • Web: www.sealey.co.uk

Parts Information: Mini Lathe & Drilling Machine Model No: SM2503



NOTE: It is our policy to continually improve products and as such we reserve the right to alter data, specifications and component parts without prior notice. There may be alternative versions of this product, please contact us should you require this information.

IMPORTANT: No liability is accepted for incorrect use of product. Spare parts must be fitted by a competent person

WARRANTY: Guarantee is 12 months from purchase date, proof of which will be required for any claim.



Parts Information:
Mini Lathe & Drilling Machine
Model No: SM2503

Item	Part No.	Description
1	SM2503.001	Change Gear Cover
2	SM2503.002	Cap Screw GB818 M4 x 8mm
3	SM2503.003	Cap Screw GB818 M4 x 12mm
4	SM2503.004	Hinge 38 x 31mm
5	SM2503.005	Washer 4
6	SN4.S	Steel Nut M4
7	SM2503.007	Cantilever
8	SM2503.008	M6 Half Nut, Black
9	FWM6.SB	Flat Washer M6 Black
10	SM2503.010	Compression Spring Ø9.7mm
11	SM2503.011	Spacing Ring
12	SM2503.012	Cover for Spindle Box
13	SM2503.013	Rotate Spindle
14	SM2503.014	Key 3 x 6mm
15	SM2503.015	Protect Cover for Chuck
16	MSC48.SB	Csk Phillips Machine Screw M4 x 8mm Black
17	SM2503.017	Cap Screw M5 x 8mm
18	SM2503.018	Rear Splash Guard
19	SM2503.019	Motor
20	SM2503.020	Key 3 x 16mm
21	SM2503.021	Check Ring 8
22	SM2503.022	Timing Pulley
23	SM2503.023	Support Plate
24	SM2503.024	Screw M4 x 8mm
25	SM2503.025	Washer 6
26	SM2503.026	Spring Washer 6
27	SM2503.027	Screw M6 x 20mm
28	SM2503.028	Washer 8
29	SM2503.029	Spring Washer 8
30	SM2503.030	Screw M8 x 20mm
31	SN18.S	Steel Nut M18
32	SM2503.032	Spindle Gear
33	SM2503.033	Spacing Ring 1
34	SM2503.034	Spindle Timing Pulley
35	SM2503.035	Spacing Ring 2
36	SM2503.036	Behind Oil Seal (Ring)
37	B/30205	Bearing 30205
38	SM2503.038	Spindle Box
39	SM2503.039	Front Oil Seal (Ring)
40	SM2503.040	Key 6 x 36mm

Item	Part No.	Description
41	SM2503.041	Spindle
42	SM2503.042	Key
43	SN6.S	Steel Nut M6
44	SM2503.044	Screw M6 x 25mm
45	SM2503.045	Chuck Flange
46	SM2503.046	Round Cap Screw M4 x 12mm
47	SM2503.047	80mm 3-Jaw Chuck
48	SM2503.048	Handle Screw (Set of 3)
49	SM2503.049	Small Handle
50	SM2503.050	Handwheel
51	SN6.SD	Steel Nut M6 Domed
52	SM2503.052	Spring Steel
53	SM2503.053	Dial
54	SM2503.054	Screw Base
55	SM2503.055	Key 2 x 18mm
56	SM2503.056	Tailstock Screw
57	SM2503.057	Screw M5 x 8mm
58	SCB520.SB	Socket Cap Bolt M5 x 20mm Black
59	SM2503.059	Tailstock Casting
60	SM2503.060	Wedge
61	SM2503.061	Lock Handle
62	SM2503.062	Tailstock Quill
63	SM2503.063	Dial
64	SM2503.064	Screw M5 x 14mm
65	SM2503.065	Screw Bracket
66	SM2503.066	Bed Lead Rail
67	SM2503.067	Leadscrew
68	SB-6.4	Steel Ball 6.4mm
69	SM2503.069	Compression Spring Ø4.8mm
70	SM2503.070	Screw M6 x 10mm
71	SM2503.071	Pin 3 x 14mm
72	SM2503.072	Clutch Bracket
73	SM2503.073	Clutch
74	SM2503.074	Woodruff Key
75	SM2503.075	Shaft
76	SM2503.076	Woodruff Key
77	SM2503.077	Gear Shaft Bracket
78	SN5.S	Steel Nut M5
79	SM2503.079	Support Plate
80	SM2503.080	Washer

NOTE: It is our policy to continually improve products and as such we reserve the right to alter data, specifications and component parts without prior notice. There may be alternative versions of this product, please contact us should you require this information.

IMPORTANT: No liability is accepted for incorrect use of product. Spare parts must be fitted by a competent person

WARRANTY: Guarantee is 12 months from purchase date, proof of which will be required for any claim.

Jack Sealey Ltd t/a Sealey Group, Kempson Way, Suffolk Business Park, Bury St Edmunds, Suffolk, IP32 7AR UK

Jack Sealey (EU) Ltd t/a Sealey Group, Farney Street, Carrickmacross, Co. Monaghan, A81 PK68 Ireland

Tel: 01284 757500 · Email: sales@sealey.co.uk · Web: www.sealey.co.uk



Parts Information:
Mini Lathe & Drilling Machine
Model No: SM2503

Item	Part No.	Description
81	SM2503.081	Change Gear Z=72
82	SM2503.082	Change Gear Z=19
83	SM2503.083	Change Gear Z=76
84	SM2503.084	Change Gear Z=24
85	SM2503.085	Gear Sleeve
86	SM2503.086	Gear Shaft
87	SM2503.087	Screw M5 x 8mm
88	SM2503.088	Spacing Ring
89	SM2503.089	Change Gear Z=90
90	SM2503.090	Screw M5 x 25mm
91	SM2503.091	Bed Base
92	SM2503.092	Screw M6 x 35mm
93	SM2503.093	Unplug Shaft
94	SM2503.094	Dam Board
95	SM2503.095	Screw M4 x 10mm
96	SM2503.096	Clutch Rotate Knob
97	SM2503.097	Screw M5 x 12mm
98	SM2503.098	Leadscrew Bracket
99	SM2503.099	Cross Slide Screw M4 x 16mm
100	SM2503.100	Saddle
101	SM2503.101	Cross Slide Nut
102	SM2503.102	Leadscrew Nut
103	SM2503.103	Cross Slide
104	SM2503.104	Screw M4 x 16mm
106	SM2503.106	Cross Slide Wedge
107	SM2503.107	Gib Strip
108	SCB840.SB	Socket Cap Bolt M8 x 40mm Black
109	SM2503.109	Tool Rest
110	SM2503.110	Tool Rest Shaft
111	SM2503.111	Connect Block
112	SM2503.112	Potentiometer
113	SM2503.113	Switch, Press & Twist (On/Off) 3A 220V
114	SM2503.114	Forward/Reverse/Off Switch 12A 250V (c/w Knob)
115	SM2503.115	Power Indicator Light 220V
116	SM2503.116	Fuse Box
117	SM2503.117N	PCB, Circuit Board, 102 x 70mm
118	SM2503.118	Lock Connect
119	SM2503.119	PC Board Box
120	SM2503.120	Screw ST2.9 x 10mm
121	SM2503.121	Micro Switch

Item	Part No.	Description
122	SM2503.122	Screw ST1.9 x 10mm
123	SM2503.123	Power Cord (c/w Plug)
130	SM2503.130	Screw M5 x 12mm
131	SM2503.131	Timing Belt
133	SM2503.133	Bolt, Slot Head M6 x 55mm Black
134	SM2503.134	Handle Sleeve
135	SM2503.135	Handwheel
136	SM2503.136	Leadscrew Bracket
137	SM2503.137	Lifter
138	SM2503.138	Woodruff Key 3 x 10mm
139	SM2503.139	Column
140	SM2503.140	Screw M6 x 18mm
141	SM2503.141	Pin 6 x 24mm
142	SM2503.142	Column Bracket
143	SM2503.143	Screw M8 x 50mm
144	SM2503.144	Protecting Cover for Motor
145	SM2503.145	Screw M6 x 12mm
146	SM2503.146	Spacing Ring
147	SM2503.147	Motor Gear
148	SM2503.148	Spacing Ring
149	SM2503.149	Cover Up Plate
150	SM2503.150	Quill Fixed Plate
151	SM2503.151	Gear Box
152	SM2503.152	Spindle Quill
153	SM2503.153	Screw M6 x 14mm
154	SM2503.154	Bearing
155	SM2503.155	Spindle Base
156	SM2503.156	Safety Cover
157	MC550.24	External Circlip ID: 18.5mm
158	SM2503.158	Spindle Gear Z=55
159	SM2503.159	Spacing Ring
160	SM2503.160	Round Nut M24 x 1.5mm
161	SM2503.161	Washer 24
162	SM2503.162	Internal Circlip Ø41.0mm
163	SM2503.163	Compression Spring 32mm
164	SM2503.164	Spring Support
165	SM2503.165	Hand Shank
166	SM2503.166	Lever Cap M8 x 40mm
167	SM2503.167	Read Out Sleeve

NOTE: It is our policy to continually improve products and as such we reserve the right to alter data, specifications and component parts without prior notice. There may be alternative versions of this product, please contact us should you require this information.

IMPORTANT: No liability is accepted for incorrect use of product. Spare parts must be fitted by a competent person

WARRANTY: Guarantee is 12 months from purchase date, proof of which will be required for any claim.

Jack Sealey Ltd t/a Sealey Group, Kempson Way, Suffolk Business Park, Bury St Edmunds, Suffolk, IP32 7AR UK

Jack Sealey (EU) Ltd t/a Sealey Group, Farney Street, Carrickmacross, Co. Monaghan, A81 PK68 Ireland

Tel: 01284 757500 · Email: sales@sealey.co.uk · Web: www.sealey.co.uk



Parts Information:
Mini Lathe & Drilling Machine
Model No: SM2503

Item	Part No.	Description
168	SM2503.168	Spring Pin M3 x 12mm
169	SM2503.169	Site Screw
170	SM2503.170	Gear Shaft
171	SM2503.171	Spacing Ring
172	SM2503.172	Connect Site Screw
173	SM2503.173	Bevel Gear
174	SM2503.174	Worm Base
175	SM2503.175	Screw M5 x 18mm
176	SM2503.176	Pin 3 x 12mm
177	SM2503.177	Connect Shaft

Item	Part No.	Description
178	SM2503.178	Pin 3 x 18mm
179	SM2503.179	Worm Shaft
180	SM2503.180	Dial
181	SM2503.181	Lock Bolt
182	SM2503.182	Woodruff Key 4 x 12mm
183	SM2503.183	Drill Spindle
184	SM2503.184	Taper Shank B12
193	SM2503.193	Power Supply Toggle Switch (On/Off)
--	SM2503-T	T-Nut (Not Shown)

NOTE: It is our policy to continually improve products and as such we reserve the right to alter data, specifications and component parts without prior notice. There may be alternative versions of this product, please contact us should you require this information.

IMPORTANT: No liability is accepted for incorrect use of product. Spare parts must be fitted by a competent person

WARRANTY: Guarantee is 12 months from purchase date, proof of which will be required for any claim.

Accessories



Item	Part No.	Description
		Accessories - Please see Catalogue
A	SM2503CSET	Collet Set MT2-M10 Ø3-10mm
B	SM2503EMSET	HSS End Mill Set MT2 Ø3-10mm
C	SM2503MCSET	Mill Chuck Set MT2-M10 Ø3-10mm
D	SM2503ICEM	Indexable Carbide End Mill MT2-M10 Ø16mm
E	SM2503QV	Quick Vice 50mm
F	SM2503RC	Revolving Centre MT1
G	SM2503HC	Live Centre MT2
H	SM2503TC	Tailstock Chuck MT1 10mm
I	SM2503THSET	Tool Holder (Parting & Bore) (Set 2pc)
J	SM2503COBT	Parting Tool & Bore Cutter (Set 2pc)

Item	Part No.	Description
M	SM2503FP	Face Plate Ø112mm
N	SM2503SR	Fixed Steady Rest
O	SM2503TCK	Thread Cutting Gear Kit Metric
P	SM2503FR	Moving Steady Rest for SM2503
V	SM3002ST	Stand for SM3002, SM2502, SM2503
--	SM2503.AT	Adjusting Tools (Not Shown)
--	SM2503.ST	Setting Tools (Not Shown)
--	SM2503.DCK	Drill Chuck Key (Not Shown)
--	SM2503.DCG	Plastic Drill Chuck Guard (Not Shown)
--	SM2503.LCK	Lathe Chuck Key, T-Shape, 7.6mm (Not Shown)

NOTE: It is our policy to continually improve products and as such we reserve the right to alter data, specifications and component parts without prior notice. There may be alternative versions of this product, please contact us should you require this information.

IMPORTANT: No liability is accepted for incorrect use of product. Spare parts must be fitted by a competent person

WARRANTY: Guarantee is 12 months from purchase date, proof of which will be required for any claim.